

Tawa Trail- Starting just a short distance from the lodge carpark, walk under a canopy of giant tawa trees and arrive out onto the lodge 4WD track. Return via the same trail or take the uphill 4WD track. Medium

Daydream Lookout- Pass through the abundant Kitchen Garden and follow the road to the viewpoint overlooking the rolling hills of the region. Medium

Valley Villa Walk- A short walk from the main lodge through to the Valley Villas through fern forest. Easy

Stairway to Heaven- Hike through lush tree ferns and tall tawa forest with stream crossings along the way to join onto Captain Cook's Stand. Medium

Captain Cook's Stand- Pass by a huge ancient rata tree stump to reach a narrow viewing window through the dense trees to the valley below. Difficult

Rainbow Trout- A short stretch of trail beginning from the forest villa road and joining onto several of the longer trails. Easy

Fisherman's Cove- A quick but beautiful detour around a stunningly clear trout pond right by the lodge. Easy

Living Waters and Glow-Worm Falls- Listen to the rush of the flowing stream at Living Waters and take in the sight of Glow-Worm Falls, but be sure to return after dark to see some of these creatures alight. Easy

Bridal Veil Falls- A cascading crystal-clear waterfall in the heart of the forest accessed by a direct trail or meander through our network of trails to reach it. A must-see. Medium

Staircase Falls- An undulating path thick with giant mamaku ferns, ending with a narrow waterfall through rocky slabs. Medium

Dream Stream- Follow a clear stream amongst the lush ferny undergrowth, an alternative route to Staircase Falls. Medium

Discovery Trail- A long wide trail up to the far reaches of the property with some spectacular views through the trees. Not recommended after heavy rain. Difficult

West Cross- A connector trail linking the west to east sections of the property. Medium

East Cross- A connector trail linking the east to west sections of the property. Medium

Kokako Heights- A trail to get the heartrate going, gain some elevation hiking to the ridgeline with spectacular views through the trees. Not recommended after heavy rain. Difficult

Boundary Road- Following along the property fence line at the top of the estate, this trail forms a loop connecting Roar Talk Point lookout and Discovery Trail. Medium

Roar Talk Point- An incredible viewpoint looking out to the property below and the hills of the surrounding region. Medium

Buffalo Run- A lovely trail through both thick native forest and open grassy valleys on the eastern side of the property. This is a great trail for walking or mountain biking. Medium

Pheasant Trail- As the name suggests keep an eye out for some of the game species- as well as the pheasants there are deer, buffalo, sheep, and turkeys. Easy

Boar's Retreat-A shortcut through hilly grassland connecting Buffalo Run and Pheasant Trail. Easy

Cabbage Tree Trail- On the downhill side of a pine stand this trail makes a fun mountain biking loop with Gobbler's Folly Trail. Easy

Gobbler's Folly- Head up onto a small ridge amongst the pine trees, then come downhill arriving out at a stand of Manuka trees. Easy

Dawn Rise- Pass by our trout fishing ponds with abundant ducks nearby, continue on to connect with further trails in the valley. Easy

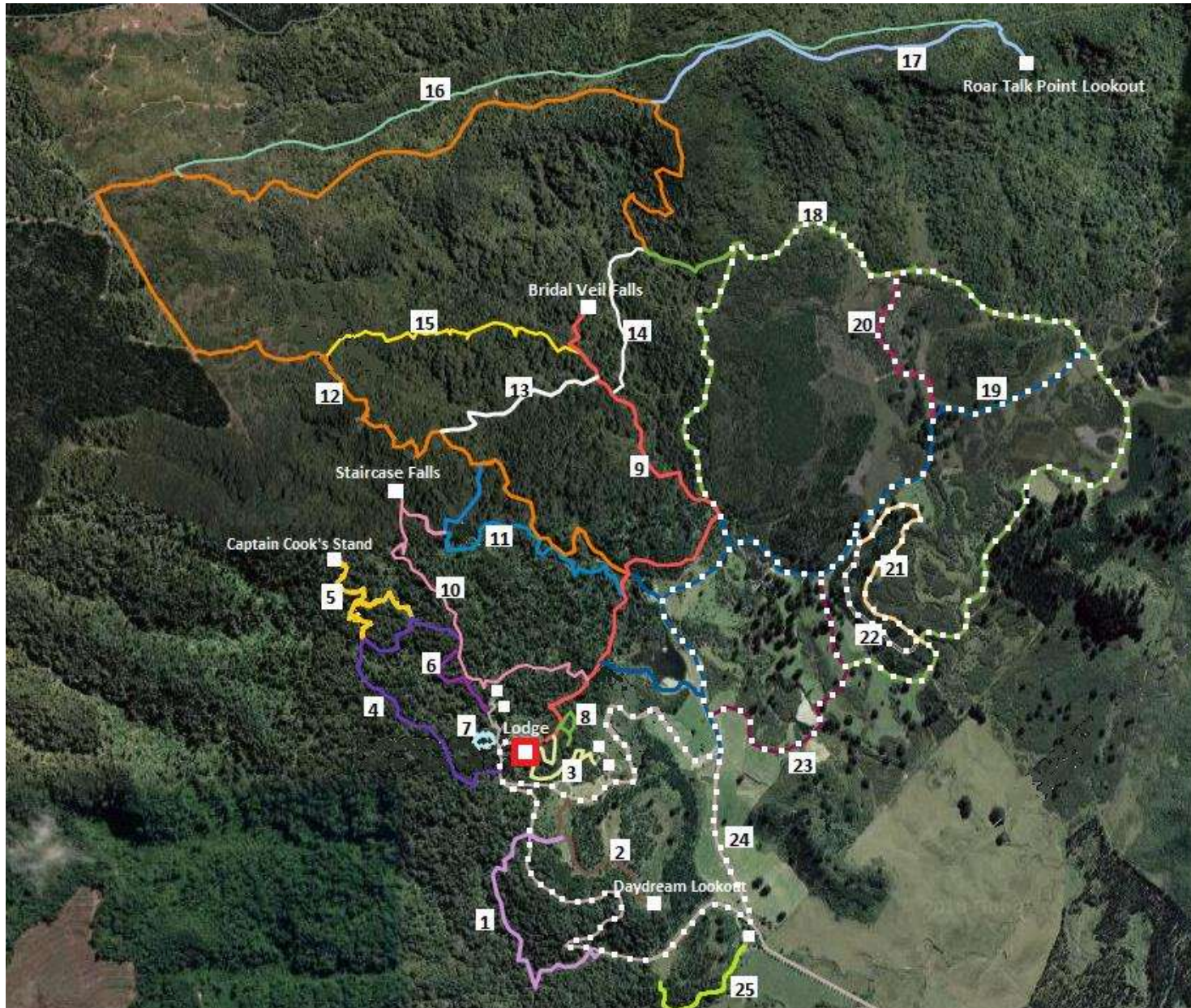
Jurassic Park Trail- A lovely little walk from the Pheasant Cottage through dense ferns up to our clay target range. Medium

TREETOPS

• LODGE & ESTATE •

TREETOPS

• LODGE & ESTATE •



Colour	Trail Name	Distance
	1. Tawa Trail	800m
	2. Daydream Lookout	500m
	3. Valley Villa Walk	500m
	4. Stairway to Heaven	1km
	5. Captain Cook's Stand	650m
	6. Rainbow Trout	300m
	7. Fisherman's Cove	100m
	8. Living Waters and Glow-worm Falls	150m
	9. Bridal Veil Falls	1.7km
	10. Staircase Falls	1.3km
	11. Dream Stream	1km
	12. Discovery Trail	4.7km
	13. West Cross	500m
	14. East Cross	500m
	15. Kokako Heights	900m
	16. Boundary Road	2.3km
	17. Roar Talk Point	1km
	18. Buffalo Run	3.7km
	19. Pheasant Trail	2km
	20. Boar's Retreat	500m
	21. Cabbage Tree Trail	700m
	22. Gobbler's Folly	500m
	23. Dawn Rise	850m
	24. Driveway	2km
	25. Jurassic Park Trail	500m

Dotted trails are shared use- walking and biking, please watch out for other users.